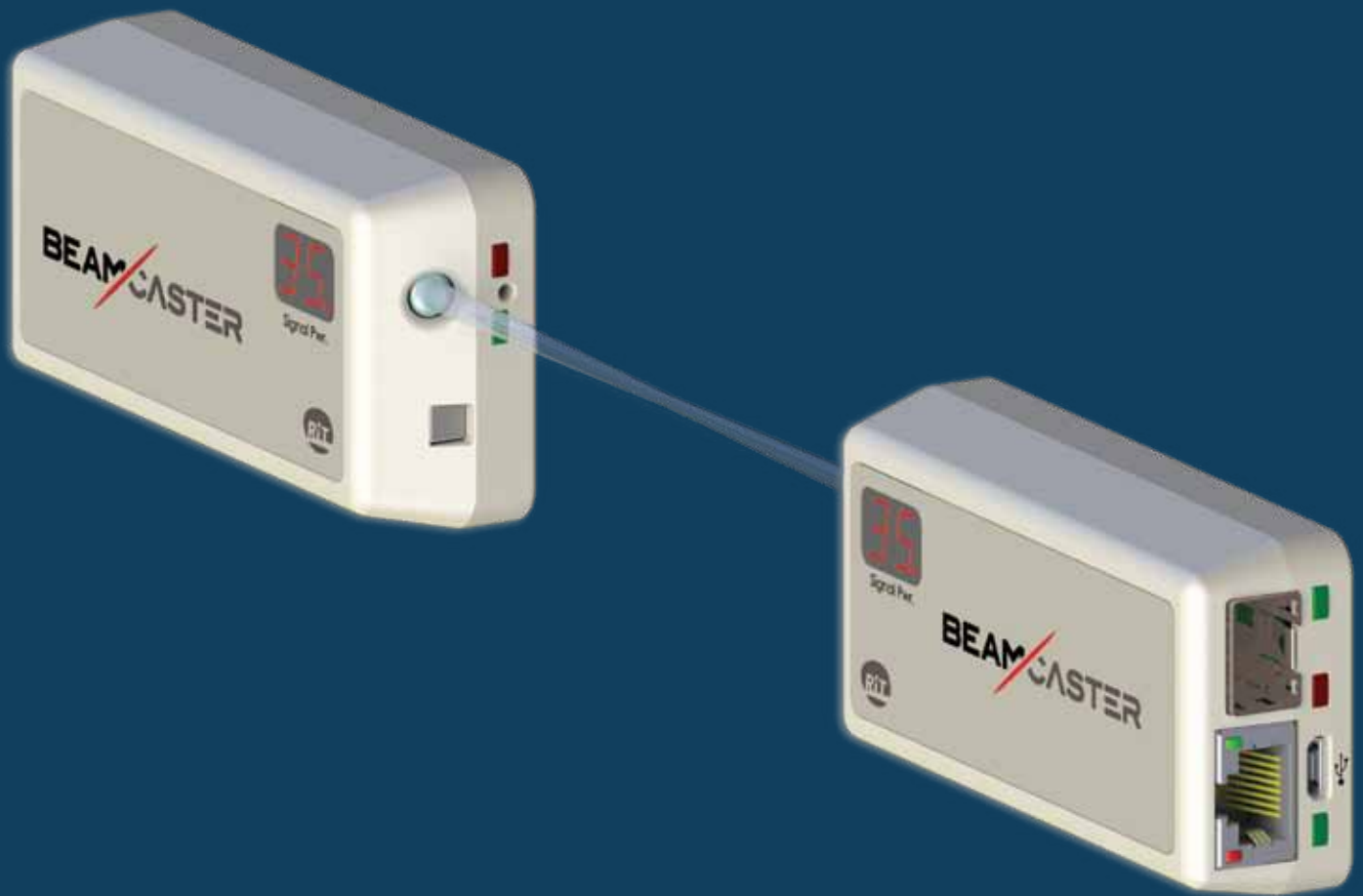


BEAMCASTER

Point-to-Point Wireless Optical Communication





Challenge: Cable Free Communication

Organizational environments often require data communication where physical cables are impractical or are rapidly eroded.

Physical cables are not a feasible option:

- Communication with moving components, such as industrial machines and robots.
- Communication with portable equipment, such as medical apparatus in the operation room.
- Communication through glass doors or windows

High erosion levels of cabling infrastructure in industrial environments:

- Constant movement of machine parts.
- The production floor environment.

Wi-Fi communication fails to make the grade

- Signal quality is unstable.
- Cannot be used in RF sensitive areas.
- Poor security.
- Limited bandwidth.

The Solution: Beamcaster Point-to-Point Wireless Optical Communication

The RiT Beamcaster point-to-point technology provides a line-of-sight (LOS) high-bandwidth optical communication that is secure, stable, and quick-and-easy to deploy.

An off-the-shelf solution that can be deployed within hours, Beamcaster combines the advantages of Wi-Fi wireless communication with the robustness, predictability and security of cabling infrastructure, opening up a range of new possibilities and deployments in the organization.

The Advantages of Beamcaster:

- **Off-the-shelf solution:** deployed quickly and easily.
- **Ultra-High bandwidth:** verified transmission bandwidth of 10GB (current product supports 1 GB).
- **High security:** 100% unhackable technology based on the line-of-sight principle and low transmission power level.
- **Low power requirements:** operates outside of the visible spectrum and requires very low power for transmission.
- **Highly portable:** can be easily transferred to other locations.
- **Predictability and stability:** constant bandwidth on par with physical network cables.
- **Multiple services:** a single smart outlet provides data, VoIP, RT and HD video.
- **Outside the scope of regulation:** not limited by government regulations as Wi-Fi.

Beamcaster Specifications:

- **Input interface:** copper, fiber optic (MM, SM, Bi-Dir) and USB 2.0.
- **Output:** invisible optical beam.
- **Bidirectional data exchange.**
- **Data rate:** up to 1GB per second (through USB 2.0 – 480 MB per second).
- **Two identical boxes, both transmitting and receiving.**
- **Protocols:** Ethernet 10/100/1000M Base-T
- **Transmission up to 20 meters (65 feet).**
- **Power source:** 5 Volt (2.5W Max) or USB 2.0.
- **Form factor:** 90x45x25 mm (3.54x1.77x0.98 inch)



Deployments:

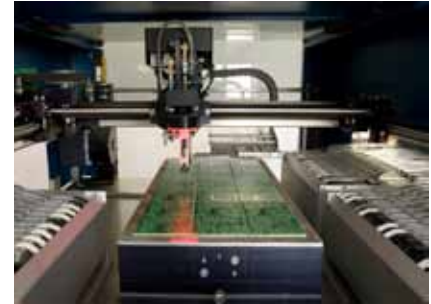
Medical



Exhibitions



Robotics



Gaming



Industrial



About RiT Technologies

RiT Technologies is an innovative developer and manufacturer of network infrastructure solutions for data centers and communication networks.

The RiT range of solutions includes intelligent network infrastructure management, data center solutions and structured cabling solutions.

RiT is also a developer of Beamcaster, an innovative indoor optical wireless network solution.

The RiT range of software and hardware products and solutions are of unwavering quality that has made RiT a premium international brand.

RiT has a local presence in eight countries and four continents, with a wide network of established partners and strong OEM partnerships.

RiT's solutions are deployed around the world in a broad range of organizations, including government, finance, airports, sport facilities, manufacturing and more.

RiT is publicly traded on NASDAQ (RITT).

**For more information
please contact us at:
info@rittech.com
www.rittech.com**



All trademarks are the property of their respective companies.
Specifications are subject to change without notice.
2014 RiT Technologies Ltd. International patent pending.

Corporate Headquarters

RiT Technologies Ltd.
24 Raoul Wallenberg St.,
Tel Aviv 69719 Israel
Tel: 972.77.270.7270
Fax: 972.3.647.4115
Email: info@rittech.com
www.rittech.com

U.S. Office

RiT Technologies, Inc.
72 South Maple Avenue
Ridgewood, NJ 07450, USA
Tel: +1.201.512.1970
email: marketing@rittech.com

Russian Office

126 Pervomayskaya str.,
Moscow
Tel: +7 495 363.9528
Email: mkt@rit.ru
www.rit.ru

Brazil Office

Tel: +55.11.8902.3180
email: mktg.la@rittech.com

China Office

Room 1502, Cyber Tower
building, A2 Zhong Guan Cun South
Avenue, Haidian District, Beijing,
China 100086
Tel: +86.10.5172.7712
Fax: +86.10.5172.7719 ext. 606
Email: mktg.china@rittech.com

UK & Ireland Office

Tel: +44.78.52.855.692
Email: mktg.uk@rittech.com

South Africa Office

Suite 213, The Business Centre, Design
Quarter, Nicol Grove Office Park,
Leslie Road, Fourways, 2055, South Africa
Tel: +27.11.513.3393
Fax: +27.86.741.8055
Email: mktg.sa@rittech.com

Singapore Office

Tel: +65.684.41211
Fax: +65.684.4123
Email: mktg.singapore@rittech.com